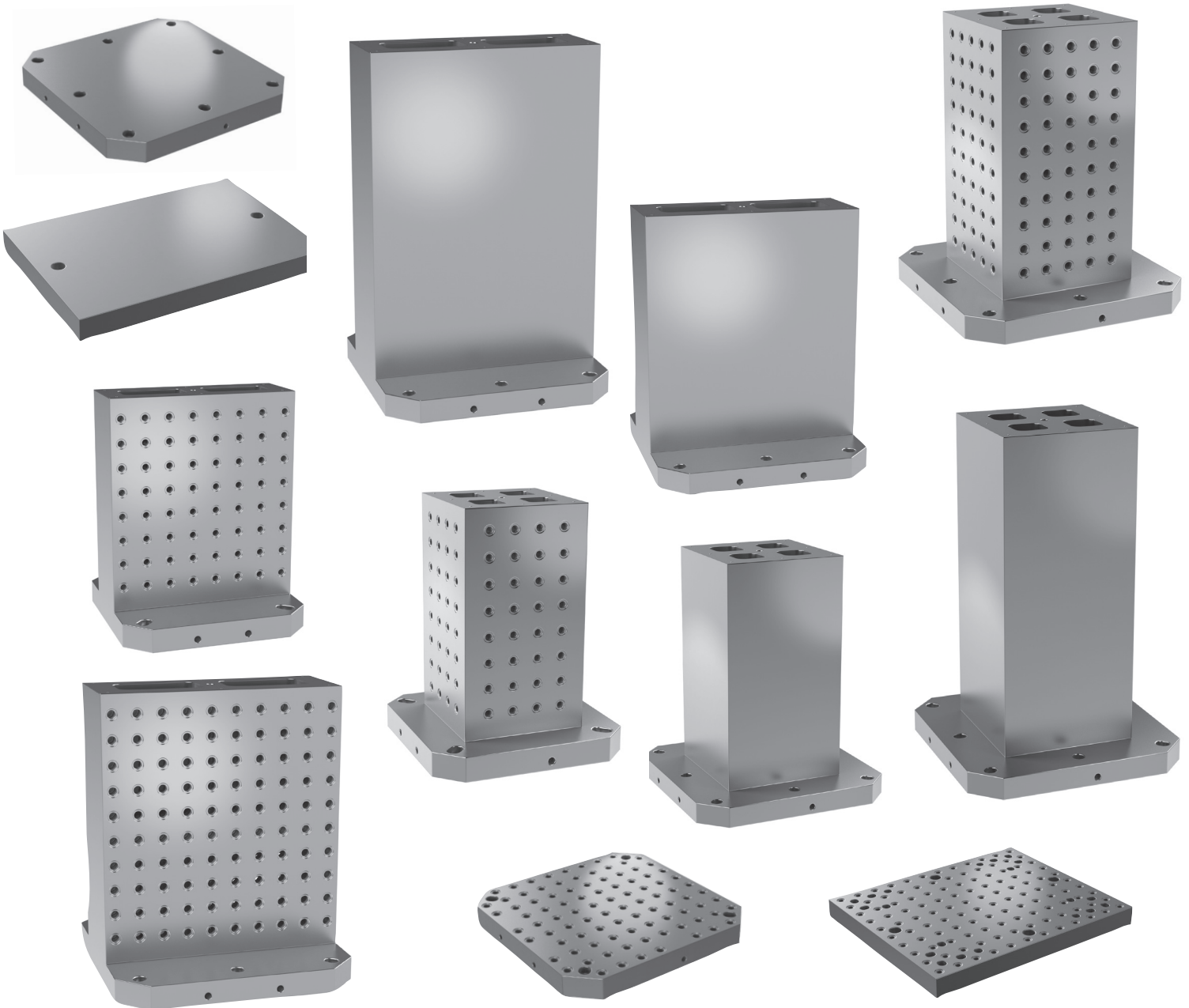


Reduce tooling cost and leadtime with TOOLING PLATES AND BLOCKS from



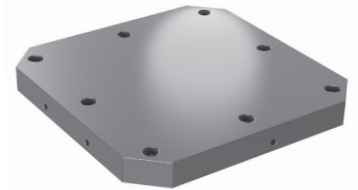
For complete technical and installation details visit carrlane.com/TB

Square Pallet Tooling Plates

These precision square pallet tooling plates are ready to mount on standard horizontal-machining-center pallets, reducing tooling cost and leadtime considerably. Finish machined to tight tolerances. JIS mounting from two reference edges provides accurate location. Available as blanks or with mounting holes to fit almost any inch or metric slot spacing.

SQUARE PALLET TOOLING PLATES – BLANK

PART NO.	B PALLET SIZE		A HEIGHT		C1	C2	D	NO. OF MOUNTING HOLES	WEIGHT (lbs)
	NOMINAL	ACTUAL	NOMINAL	ACTUAL					
CL-400-PTPB	400mm	15.7480	50mm	1.9685	320mm	11.81	55mm	4	126
CL-500-PTPB	500mm	19.6850	50mm	1.9685	400mm	16	75mm	8	194



SQUARE PALLET TOOLING PLATES

SIZE	PART NO.	MULTIPURPOSE HOLES				PALLET SIZE	PLATE THICKNESS	WEIGHT (lbs)
		THREAD	ID	SPACING	PATTERN			
HEAVY	CL-400-PTPM-50	5/8-11	.6250	2.0000	10x10	400mm	50mm	175
	12x12				500mm	280		

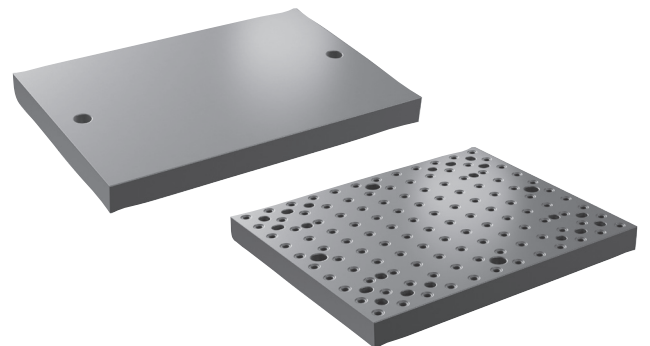


Rectangular Tooling Plates

These precision rectangular tooling plates are ready to mount on virtually any vertical machining center. And like the square tooling plates above, these rectangular tooling plates reduce tooling cost and leadtime considerably. Finish machined to tight tolerances. Precision Locating-Key holes allow accurate mounting directly on a machine table. Ideal tooling plate for most milling machines. Available as blanks or with multipurpose holes located within .0008 inches of true position. Mounting holes fit almost any inch or metric slot spacing. Plates can be accurately connected to create many length and width combinations.

RECTANGLE PALLET TOOLING PLATES – BLANK

PART NO.	A		B		C	WEIGHT (lbs)
	NOMINAL	ACTUAL	NOMINAL	ACTUAL		
CL-1624-RTPB	16	15.75	24	23.62	20	188
CL-2024-RTPB	20	19.69	24	23.62	20	235



RECTANGLE PALLET TOOLING PLATES

SIZE	PART NO.	MULTIPURPOSE HOLES				PLATE WIDTH		PLATE LENGTH		MOUNTING SCREWS	NO. OF MOUNTING SCREWS REQUIRED	WEIGHT (lbs)
		THREAD	ID	SPACING	PATTERN	NOMINAL	ACTUAL	NOMINAL	ACTUAL			
STANDARD	CL-1620-RTPM-40	1/2-13	.5000	2.0000	8x10	16	15.875	20	19.875	1/2-13 or M12	4	160
	10x12				20	19.875	24	23.875	238			

For complete technical and installation details visit carrlane.com/TB

Two-Sided Tooling Blocks

Precision two-sided tooling blocks for horizontal-machining-center pallets. One-piece cast iron construction provides superior accuracy, dimensional stability, and vibration dampening. Dual mounting capability allows both JIS mounting (locating from two reference edges) and DIN mounting (locating from center and radial holes) with excellent accuracy. Universal mounting holes fit almost any inch or metric slot spacing. Both faces are accurately finish machined to tight tolerances, and qualified to the base. These tooling blocks have two identical wide faces to allow fixturing large parts.

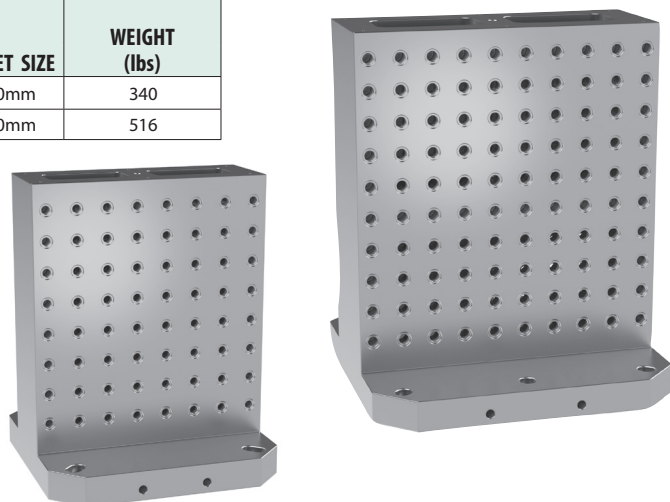
TWO-SIDED TOOLING BLOCKS – BLANK

PART NO.	B PALLET SIZE		A HEIGHT		C		D1	D2	E	F	G	H	NO. OF MOUNTING HOLES	WEIGHT (lbs)
	NOMINAL	ACTUAL	NOMINAL	ACTUAL	NOMINAL	ACTUAL								
CL-400400500-TTBB	400mm	15.7480	500mm	19.69	150mm	5.9055	320mm	11.81	7.8740	55mm	1.97	15.75	4	375
CL-400400650-TTBB			650mm	25.59										520
CL-500500600-TTBB	500mm	19.6850	600mm	23.62	200mm	7.8740	400mm	16	9.8425	75mm	1.97	19.69	6	584
CL-500500750-TTBB			750mm	29.53										820



TWO-SIDED TOOLING BLOCKS

SIZE	PART NO.	MULTIPURPOSE HOLES				PALLET SIZE	WEIGHT (lbs)
		THREAD	ID	SPACING	PATTERN		
STANDARD	CL-400400500-TTBM-40	1/2-13	.5000	2.0000	8x8	400mm	340
HEAVY	CL-500500600-TTBM-50	5/8-11	.6250	2.0000	10x10	500mm	516



For complete technical and installation details visit carrlane.com/TB

Four-Sided Tooling Blocks

Precision four-sided tooling blocks for horizontal-machining-center pallets. One-piece cast iron construction provides superior accuracy, dimensional stability, and vibration dampening. All four faces machined to tight tolerances and qualified to the base. Dual mounting capability allows both JIS mounting (locating from two reference edges) and DIN mounting (locating from center and radial holes) with excellent accuracy. Universal mounting holes fit almost any inch or metric slot spacing. These tooling blocks have four identical faces making them ideal for loading a large number of medium-size parts on a pallet.

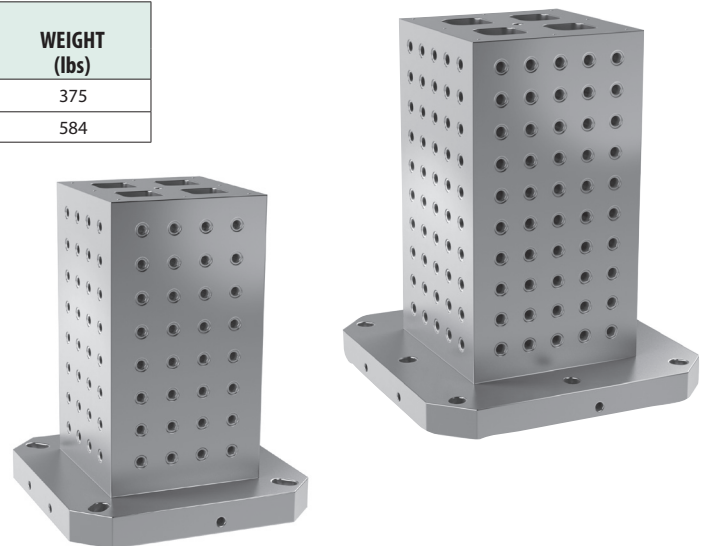
FOUR-SIDED TOOLING BLOCKS – BLANK

PART NO.	B PALLET SIZE		A HEIGHT		C		D1	D2	E	F	G	NO. OF MOUNTING HOLES	WEIGHT (lbs)
	NOMINAL	ACTUAL	NOMINAL	ACTUAL	NOMINAL	ACTUAL							
CL-400250500-FTBB	400mm	15.7480	500mm	19.69	250mm	9.8425	320mm	11.81	7.8740	55mm	1.97	4	337
CL-400250650-FTBB			650mm	25.59									481
CL-500300600-FTBB	500mm	19.6850	600mm	23.62	300mm	11.8110	400mm	16	9.8425	75mm	1.97	8	551
CL-500300750-FTBB			750mm	29.53									739



FOUR-SIDED TOOLING BLOCKS

SIZE	PART NO.	MULTIPURPOSE HOLES				PALLET SIZE	WEIGHT (lbs)
		THREAD	ID	SPACING	PATTERN		
STANDARD	CL-400250500-FTBM-40	1/2-13	.5000	2.0000	4x8	400mm	375
HEAVY	CL-500300600-FTBM-50	5/8-11	.6250	2.0000	5x10	500mm	584



For complete technical and installation details visit carrlane.com/TB